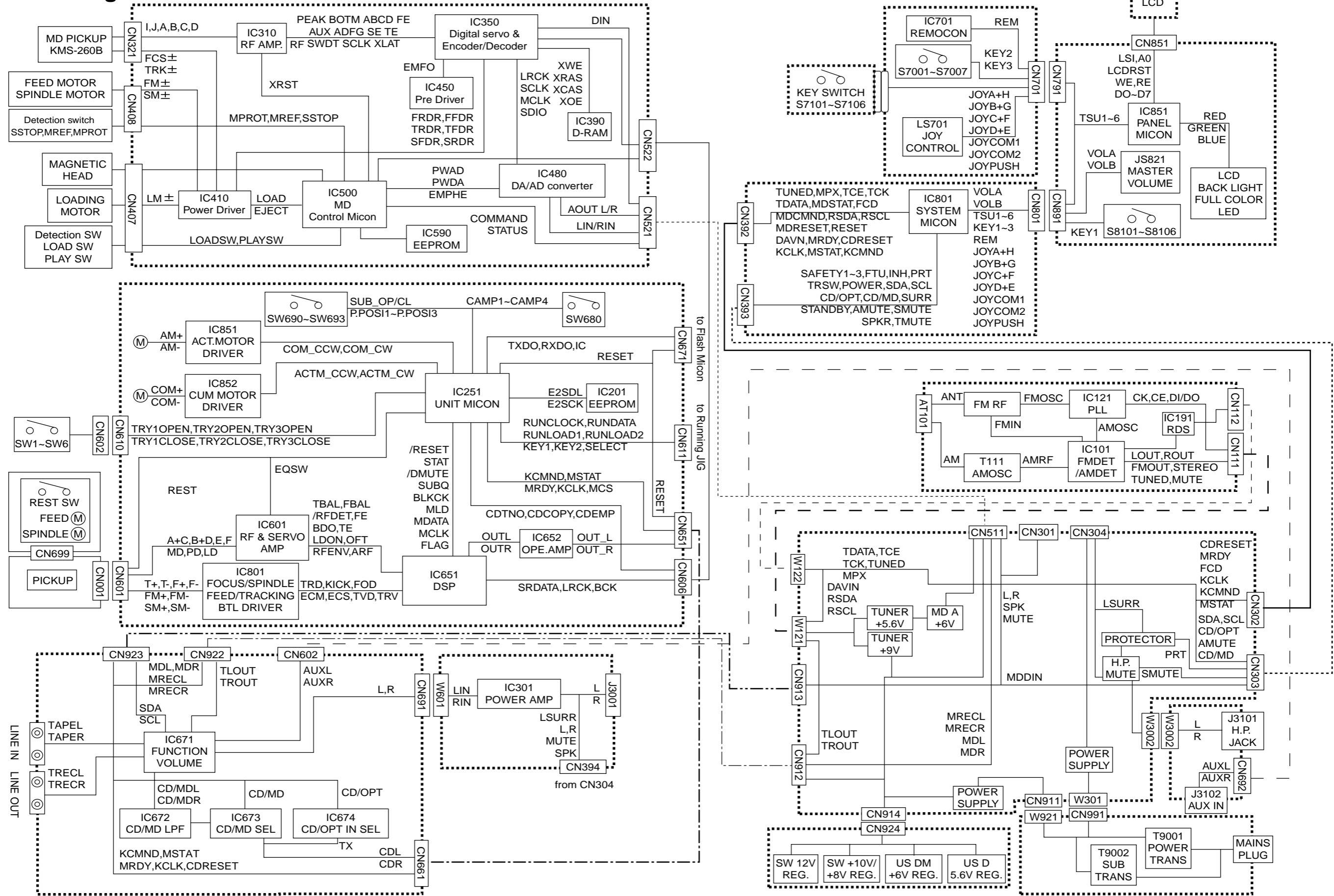
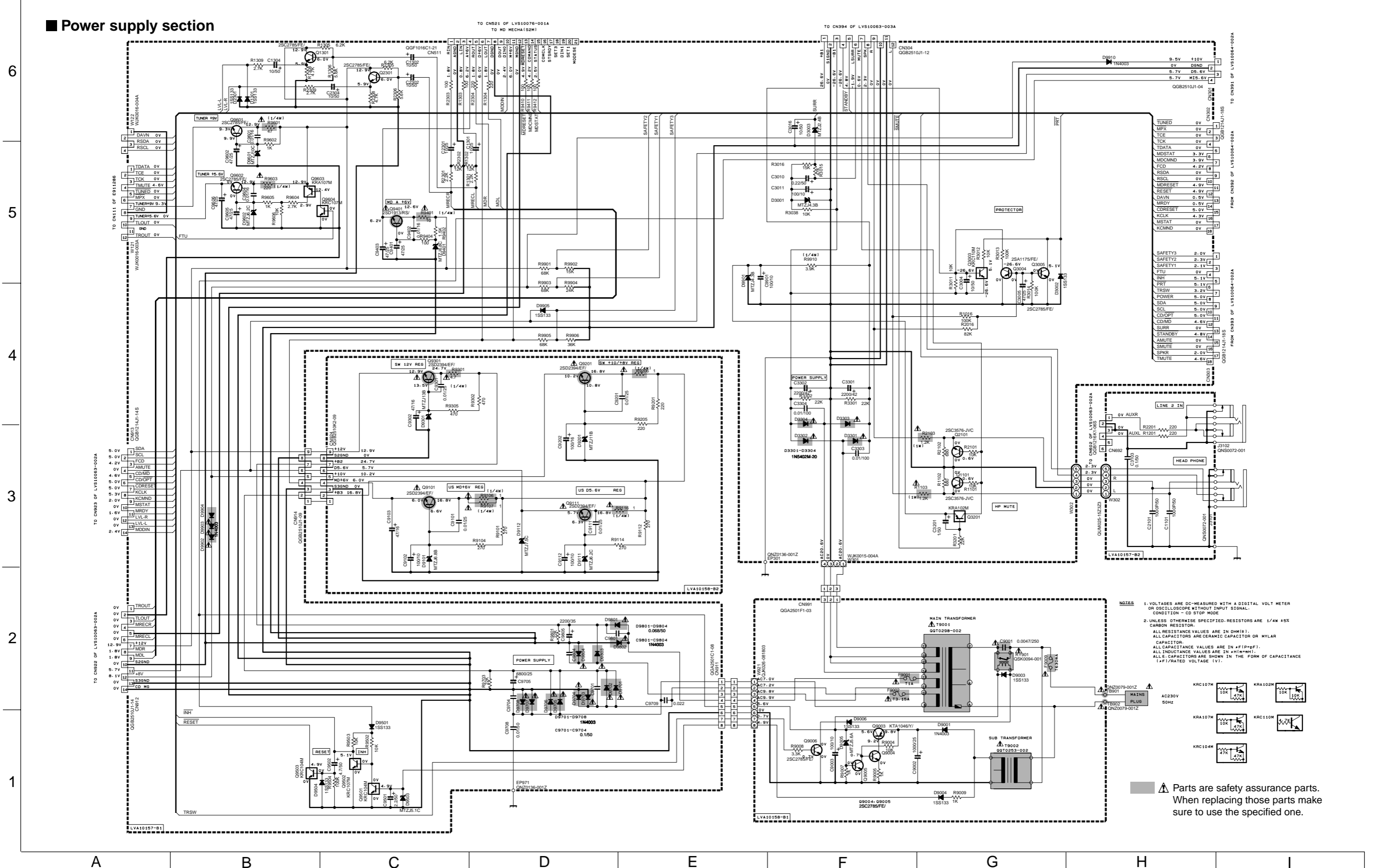


# Block diagram

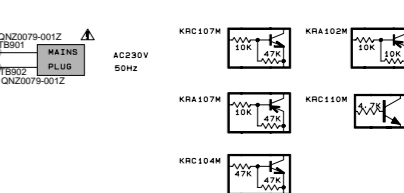


# Standard schematic diagrams

## Power supply section



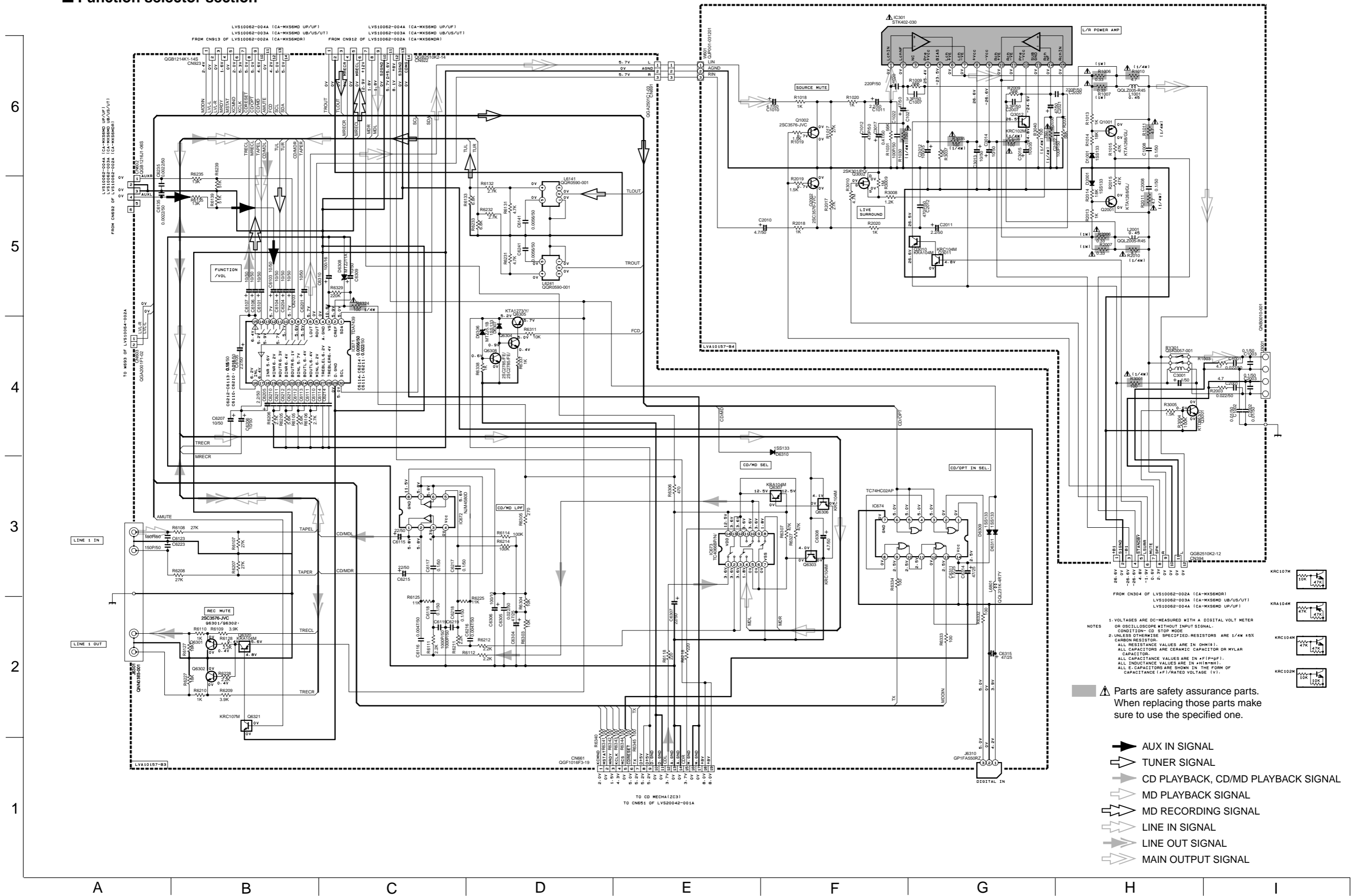
- NOTES**
1. VOLTAGES ARE DC-MEASURED WITH A DIGITAL VOLT METER OR OSCILLOSCOPE WITHOUT INPUT SIGNAL. CONDITION - CD STOP MODE
  2. UNLESS OTHERWISE SPECIFIED, RESISTORS ARE 1/4W ±5% CARBON RESISTOR.
  3. ALL RESISTANCE VALUES ARE IN OHM(Ω).
  4. ALL CAPACITANCE VALUES ARE IN nF(nPpF).
  5. ALL INDUCTANCE VALUES ARE IN mH(mH).
  6. ALL CAPACITORS ARE SHOWN IN THE FORM OF CAPACITANCE (μF)/RATED VOLTAGE (V).



Parts are safety assurance parts. When replacing those parts make sure to use the specified one.

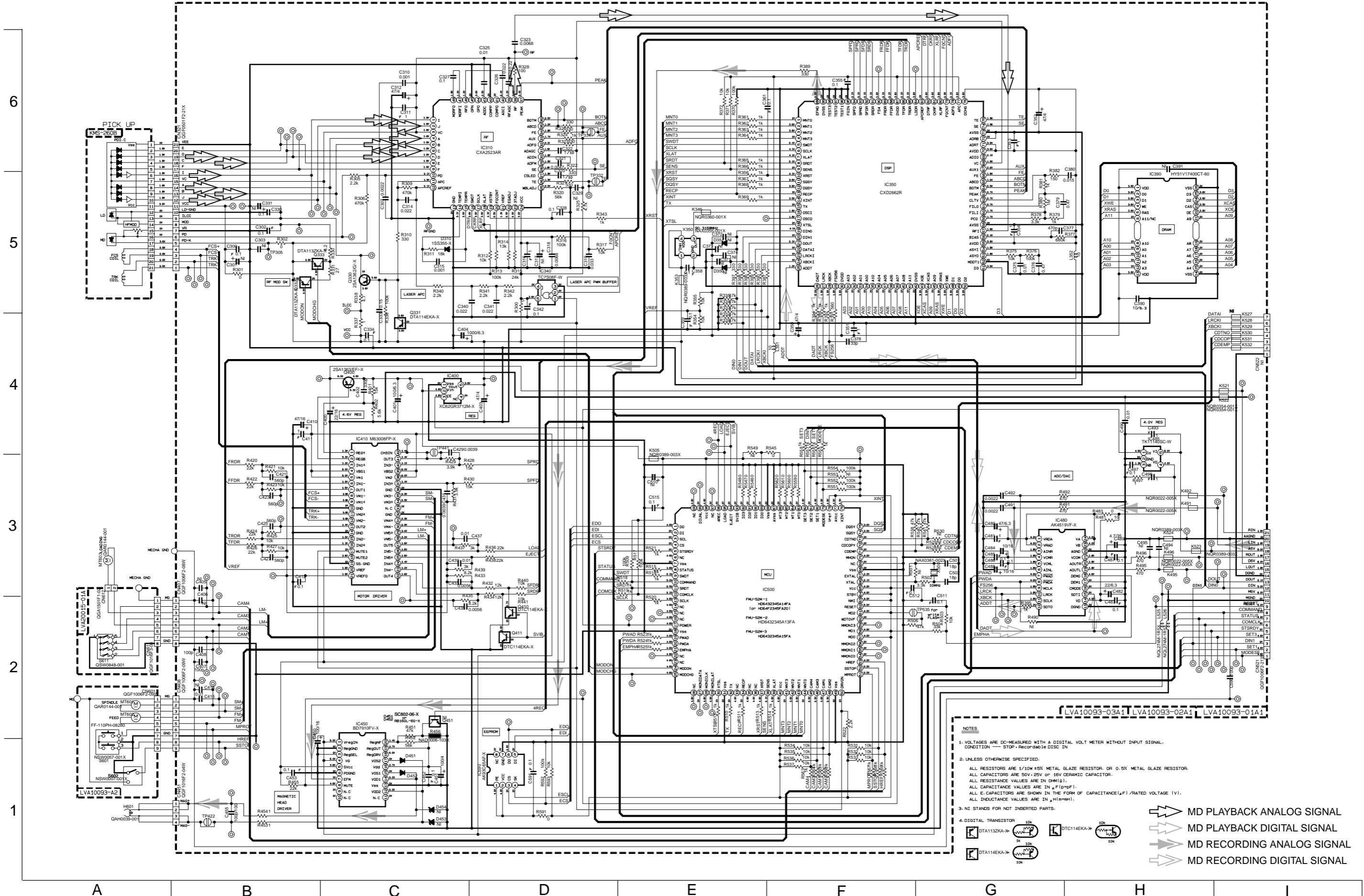


■ Function selector section



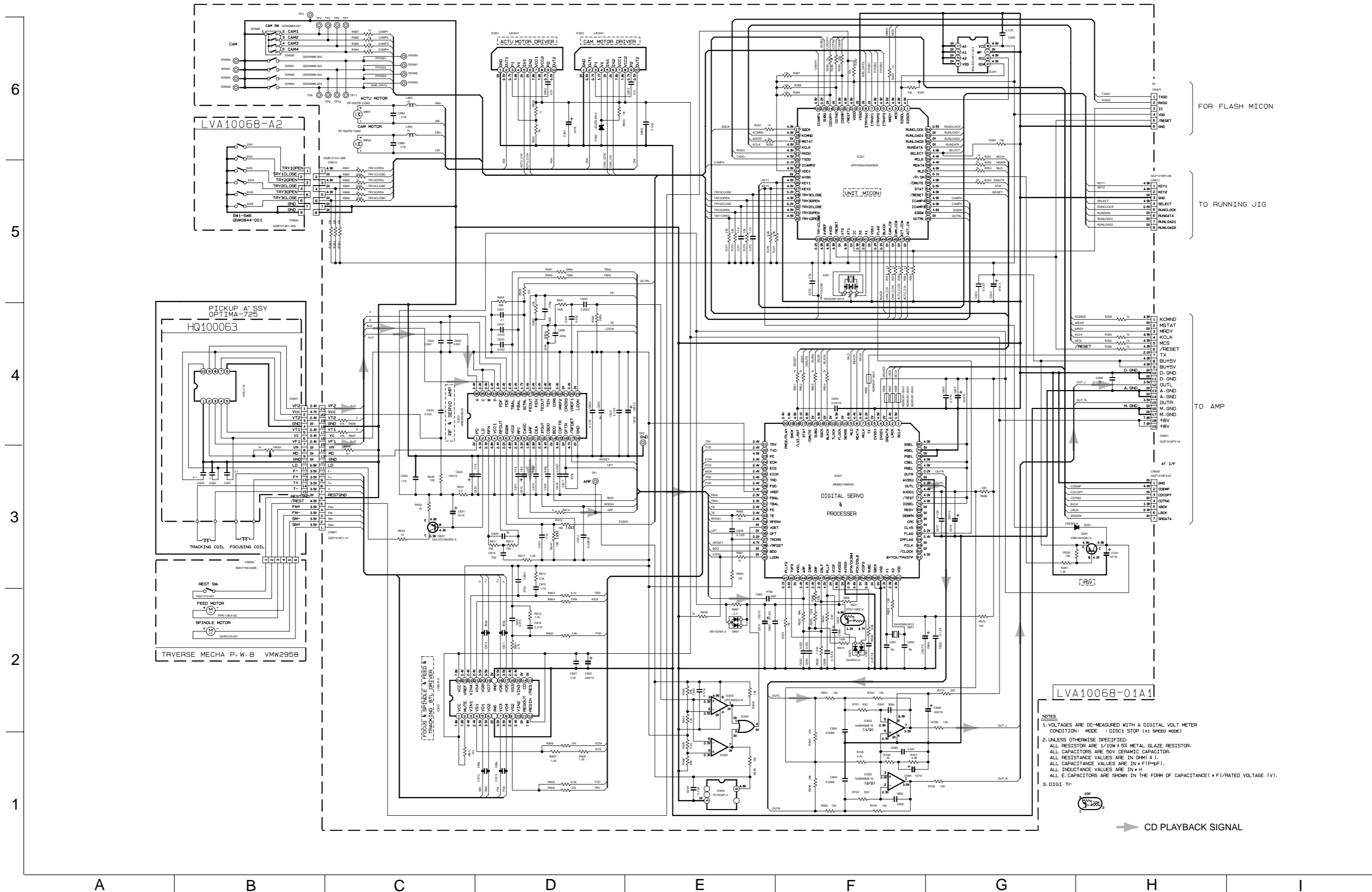
- FROM CN304 OF LVS10062-002A (CA-MXS6MDR)  
LVS10062-003A (CA-MXS6MD UB/US/UT)  
LVS10062-004A (CA-MXS6MD UP/UF)
- NOTES
1. VOLTAGES ARE DC-MEASURED WITH A DIGITAL VOLT METER OR OSCILLOSCOPE WITHOUT INPUT SIGNAL. CONDITION: CD STOP MODE.
  2. UNLESS OTHERWISE SPECIFIED, RESISTORS ARE 1/4W 5% CARBON RESISTOR. ALL RESISTANCE VALUES ARE IN OHM(S). ALL CAPACITORS ARE CERAMIC CAPACITOR OR MYLAR CAPACITOR. ALL CAPACITANCE VALUES ARE IN #F(P#PF). ALL INDUCTANCE VALUES ARE IN #H(M#H). ALL ELECTRIC CAPACITORS ARE SHOWN IN THE FORM OF CAPACITANCE (#F)/RATED VOLTAGE (V).
- ▲ Parts are safety assurance parts. When replacing those parts make sure to use the specified one.
- ➔ AUX IN SIGNAL
  - ➔ TUNER SIGNAL
  - ➔ CD PLAYBACK, CD/MD PLAYBACK SIGNAL
  - ➔ MD PLAYBACK SIGNAL
  - ➔ MD RECORDING SIGNAL
  - ➔ LINE IN SIGNAL
  - ➔ LINE OUT SIGNAL
  - ➔ MAIN OUTPUT SIGNAL
- KRC107M 10K 47K  
KRA104M 47K 47K  
KRC104M 47K 47K  
KRC102M 10K 10K

MD servo control section



- NOTES**
1. VOLTAGES ARE DC-MEASURED WITH A DIGITAL VOLT METER WITHOUT INPUT SIGNAL.  
CONDITION — STOP, RECORD IN DISC IN
  2. UNLESS OTHERWISE SPECIFIED.  
ALL RESISTORS ARE 1/10W ±5% METAL GLAZE RESISTOR, OR 0.5W METAL GLAZE RESISTOR.  
ALL CAPACITORS ARE 50V, 25V OR 16V CERAMIC CAPACITOR.  
ALL RESISTANCE VALUES ARE IN Ω(M), K(10<sup>3</sup>), M(10<sup>6</sup>).  
ALL CAPACITANCE VALUES ARE IN μF(PF).  
ALL C. CAPACITORS ARE SHOWN IN THE FORM OF CAPACITANCE(μF)/RATED VOLTAGE (V).  
ALL INDUCTANCE VALUES ARE IN μH(MH).
  3. NI STANDS FOR NOT INSERTED PARTS.
  4. DIGITAL TRANSISTOR
- DTA1132KA-  
 DTA114EKA-  
 DTC114EKA-  
 DTA114EKA-
- MD PLAYBACK ANALOG SIGNAL  
 MD PLAYBACK DIGITAL SIGNAL  
 MD RECORDING ANALOG SIGNAL  
 MD RECORDING DIGITAL SIGNAL

CD servo control section



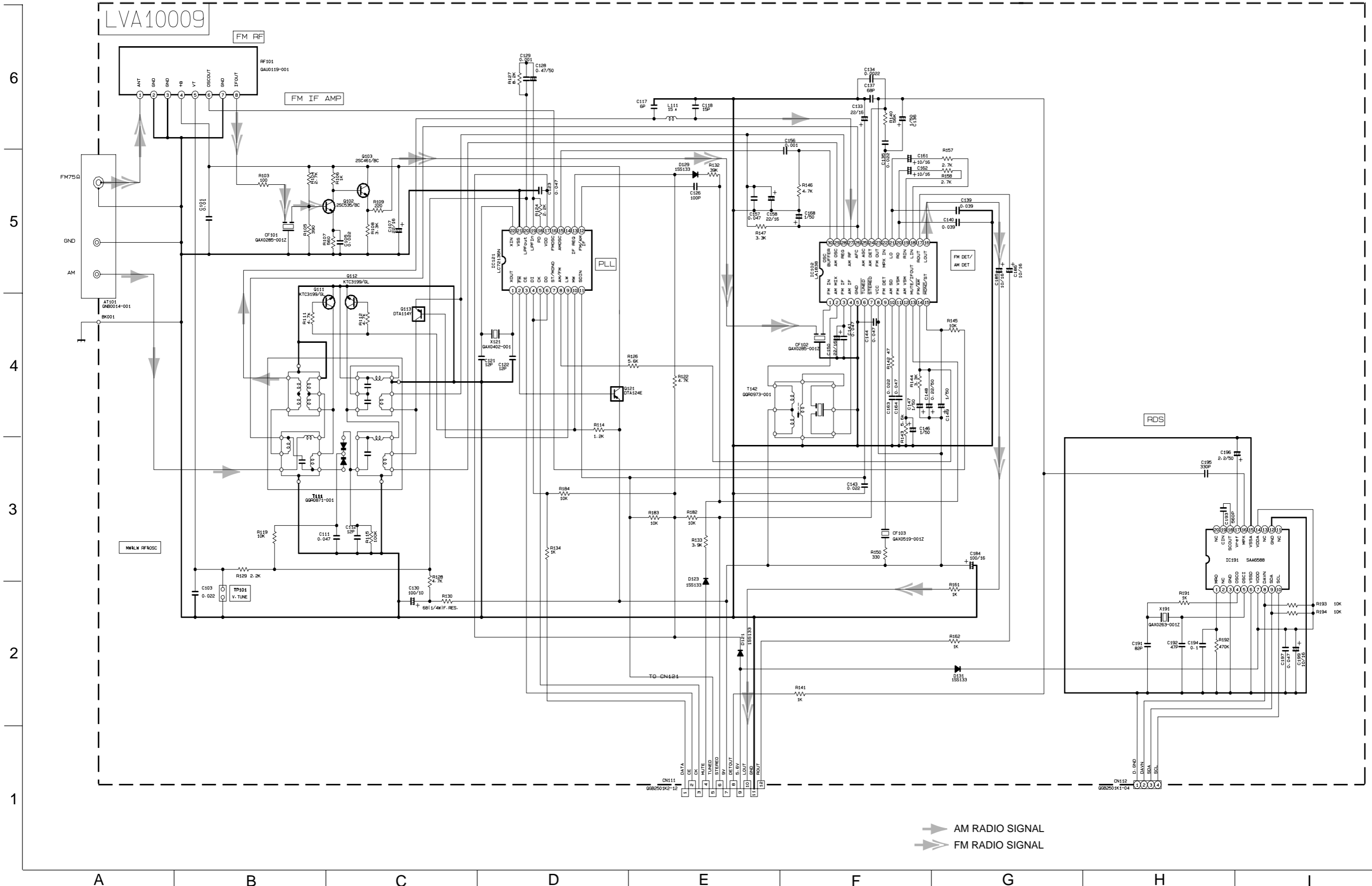
LVA10068-01A1

- NOTES
1. VOLTAGES ARE DC-MEASURED WITH A DIGITAL VOLT METER CONDITION: MODE 1 DISC1 STOP (x1 SPEED MODE)
  2. UNLESS OTHERWISE SPECIFIED:  
ALL RESISTOR ARE 1/10W ± 5% METAL GLAZE RESISTOR.  
ALL CAPACITORS ARE 50V CERAMIC CAPACITOR.  
ALL RESISTANCE VALUES ARE IN OHM (Ω).  
ALL CAPACITANCE VALUES ARE IN μF (μF).  
ALL INDUCTANCE VALUES ARE IN mH  
ALL E. CAPACITORS ARE SHOWN IN THE FORM OF CAPACITANCE (μF)/RATED VOLTAGE (V).
  3. DIGI Tr



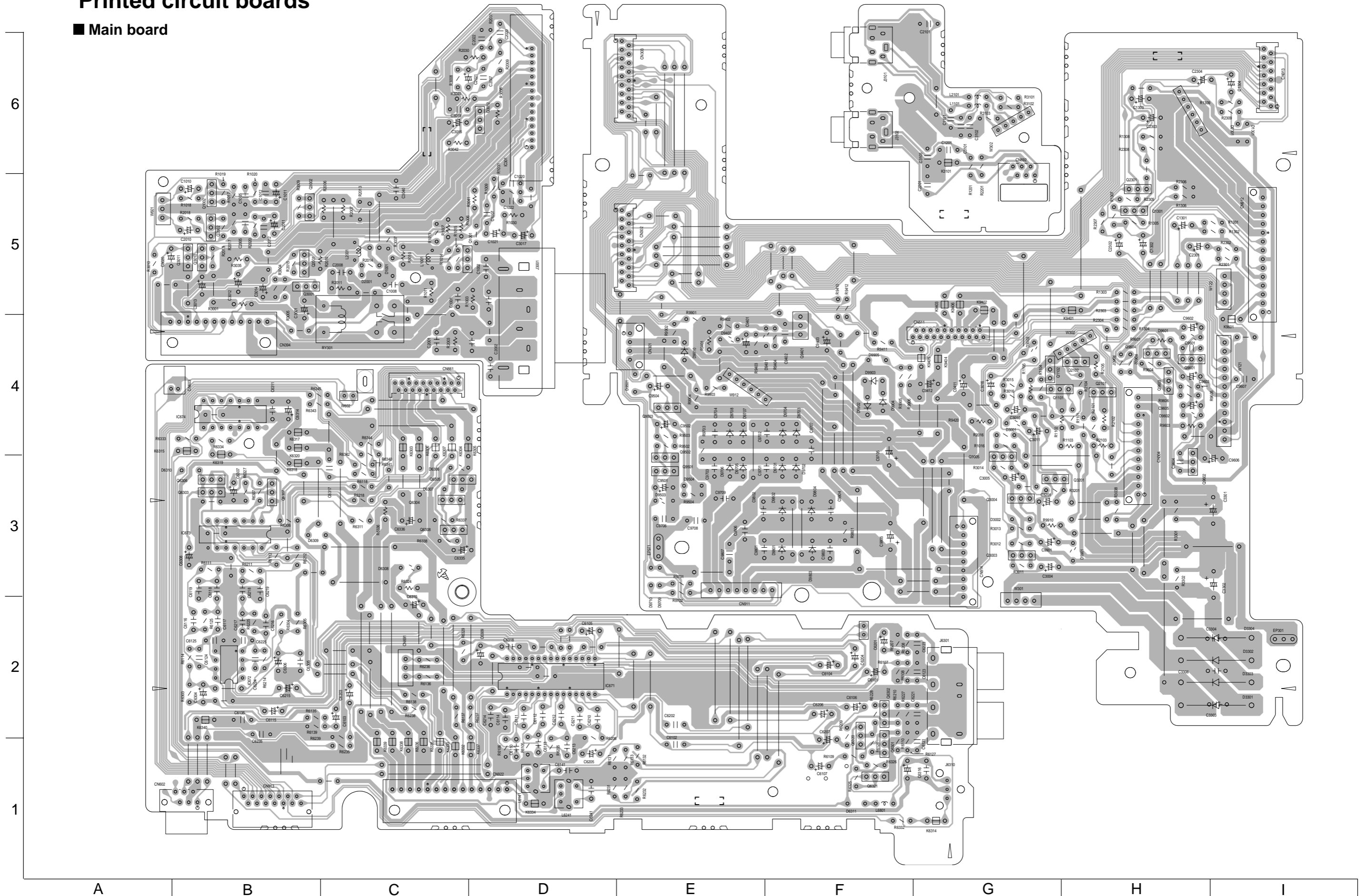
→ CD PLAYBACK SIGNAL

■ Tuner section



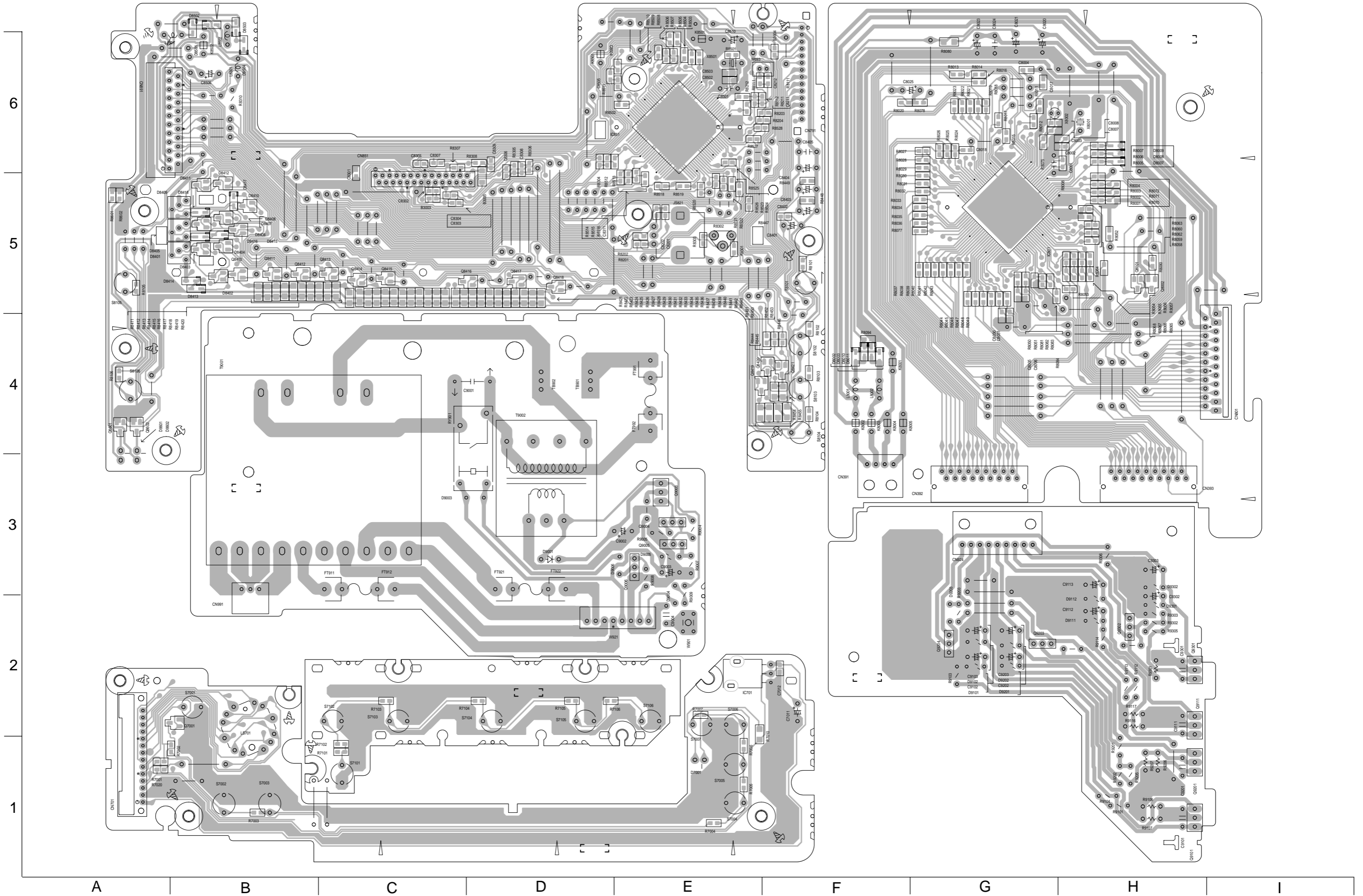
# Printed circuit boards

■ Main board

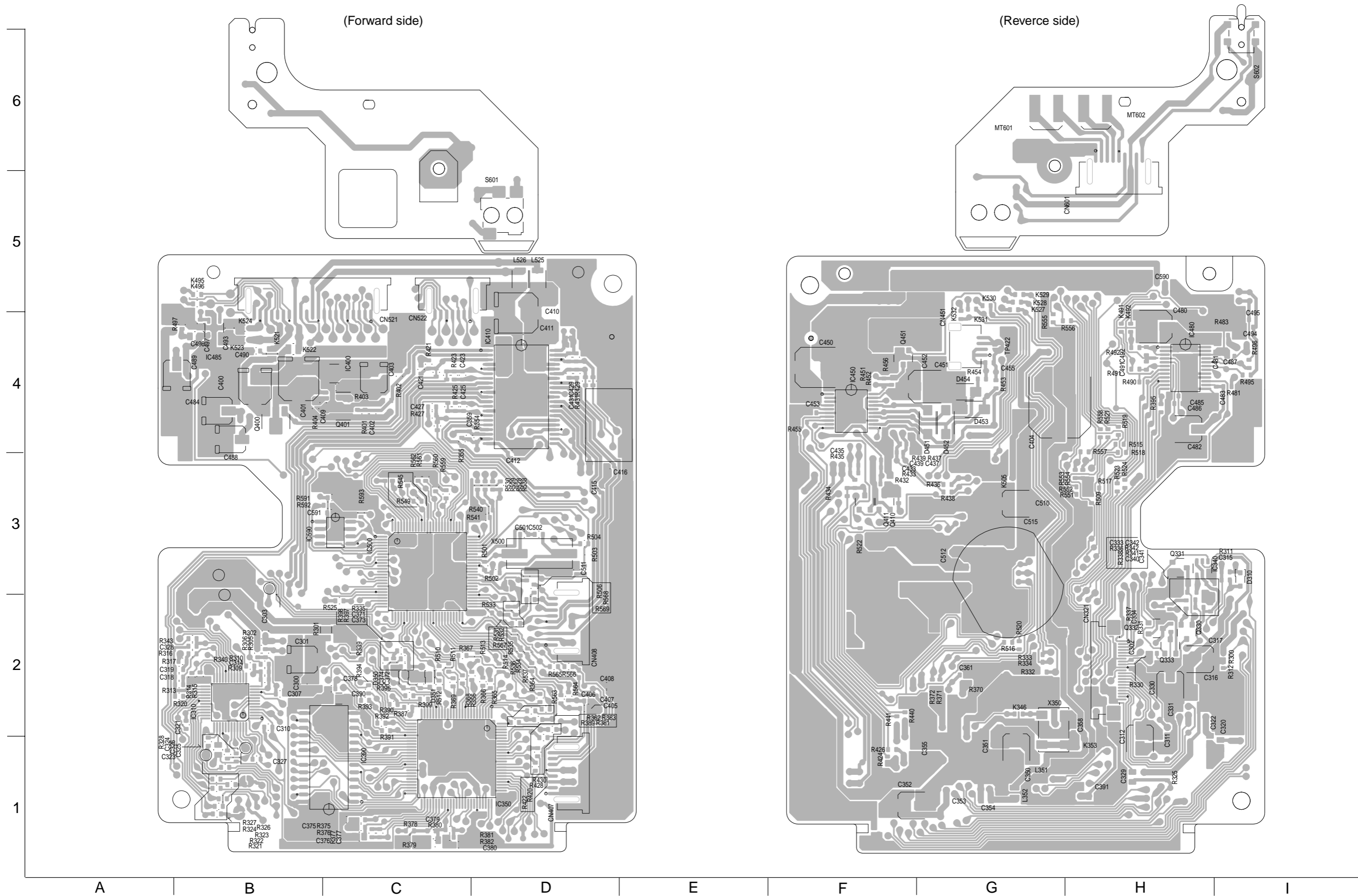




■ Micon board



■ MD servo board



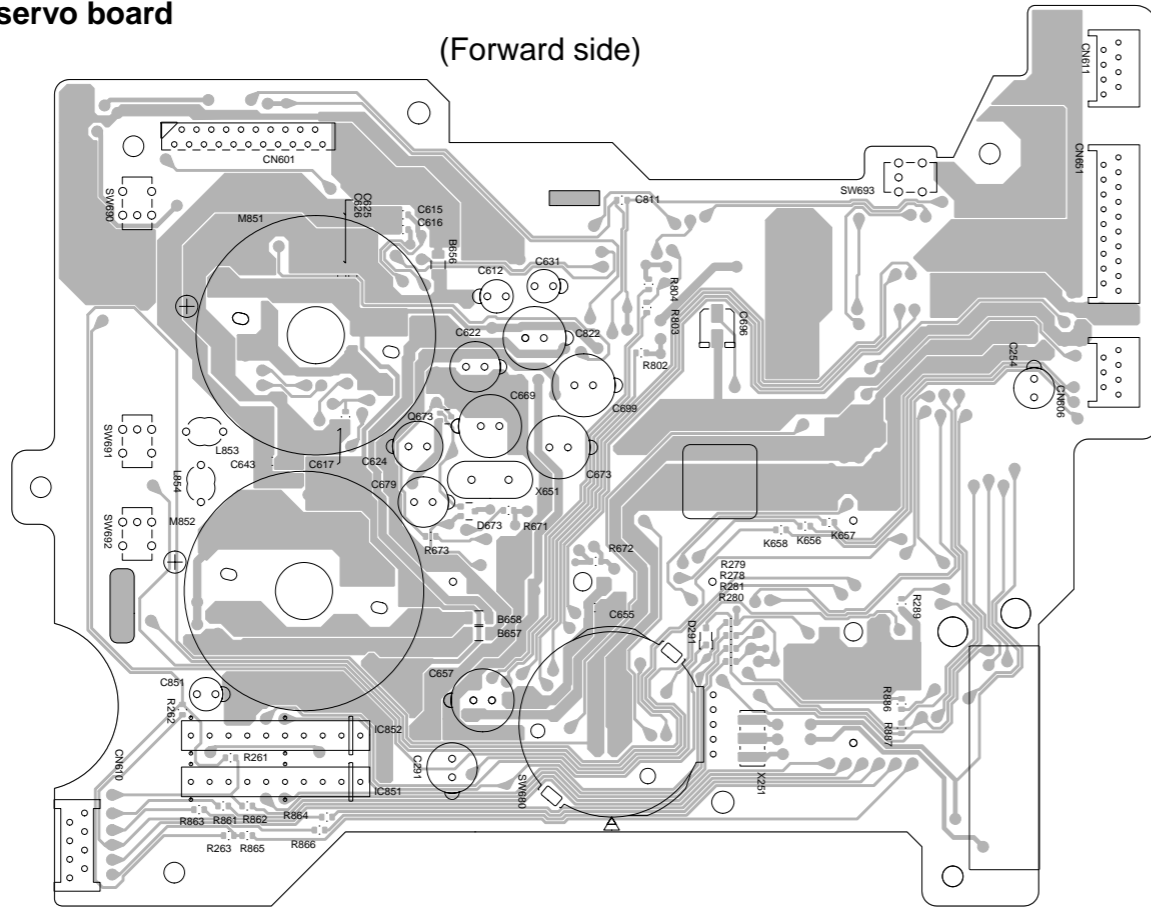
■ CD servo board

(Forward side)

6

5

4

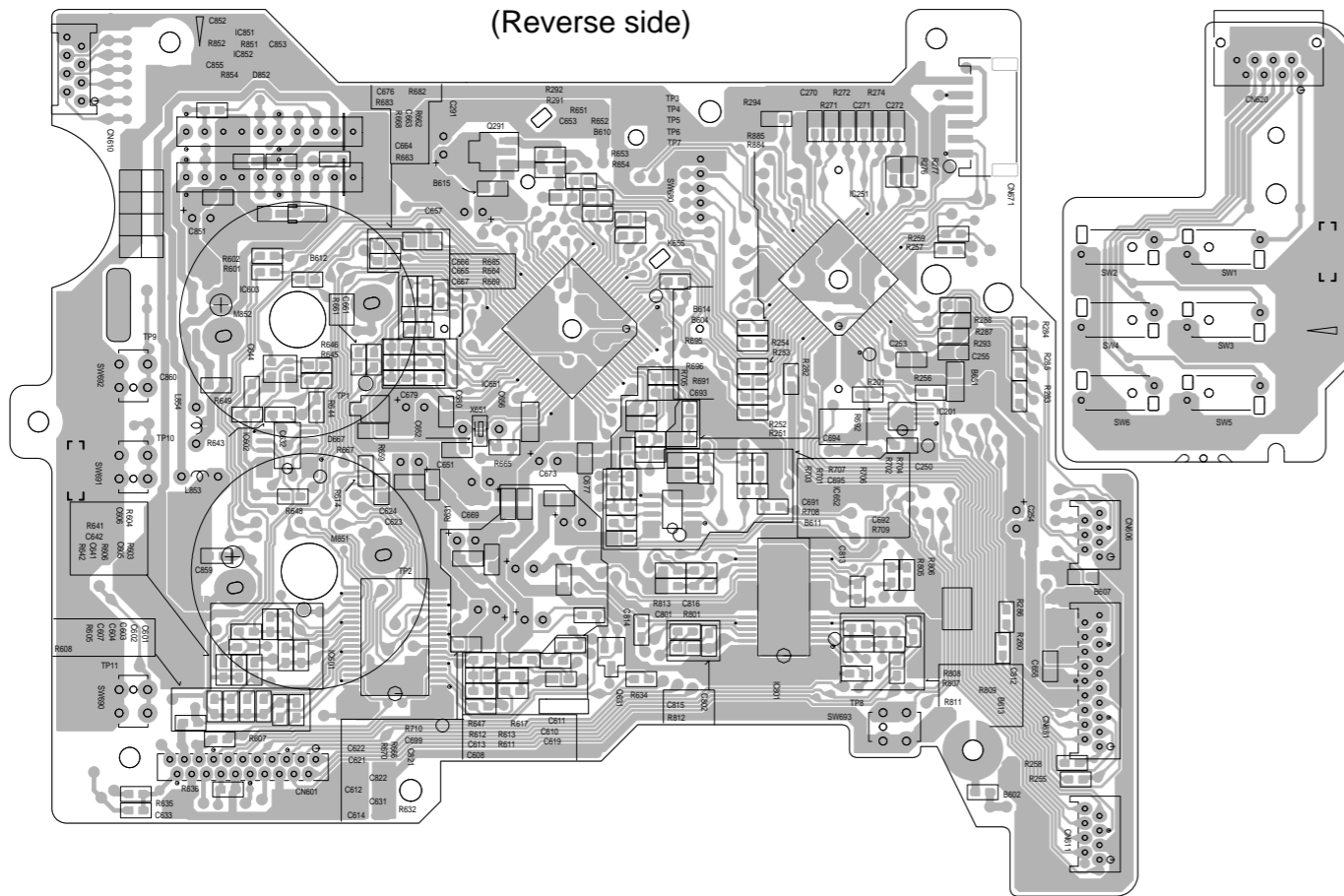


(Reverse side)

3

2

1



A

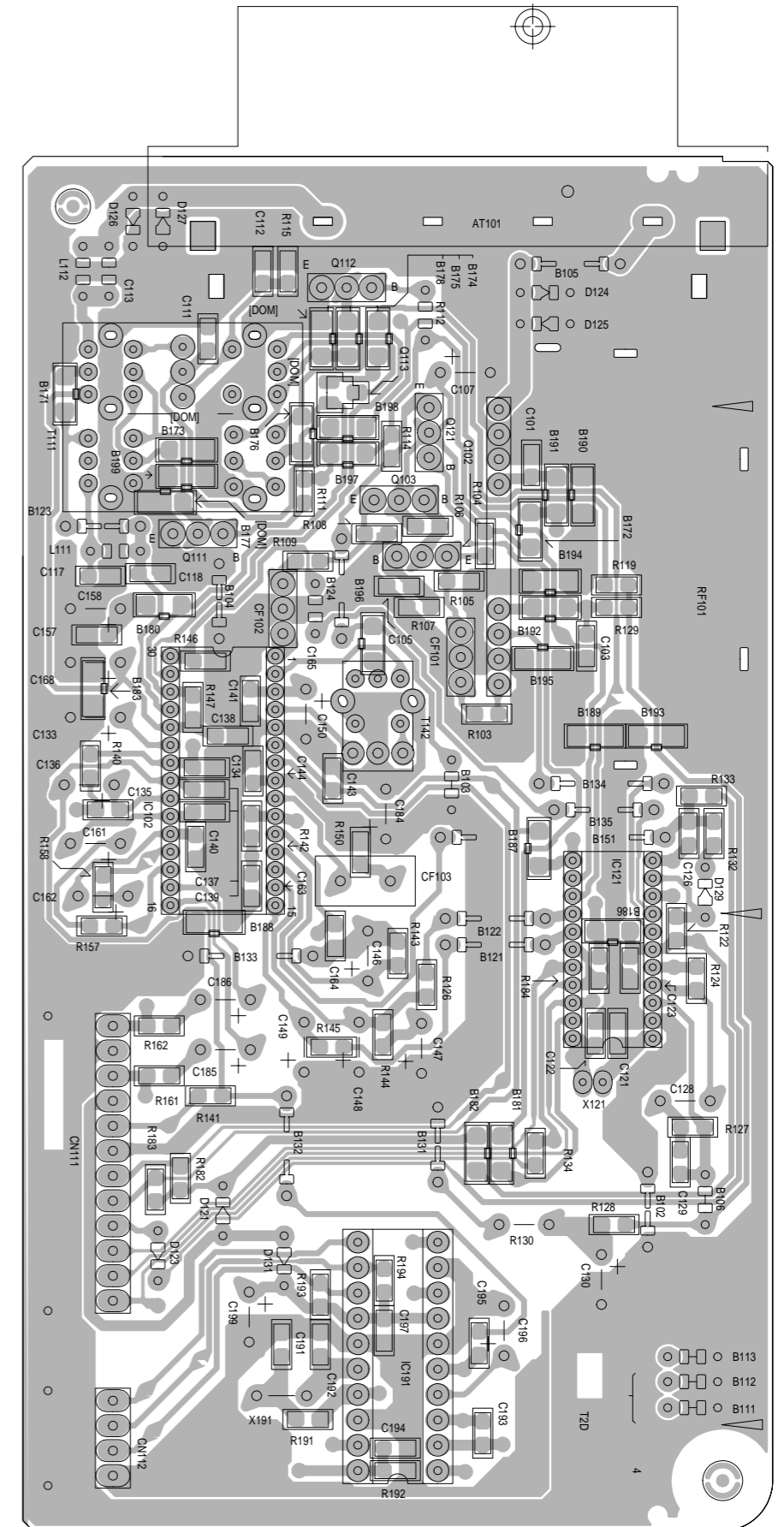
B

C

D

E

■ Tuner board



G

H

I

<<MEMO>>